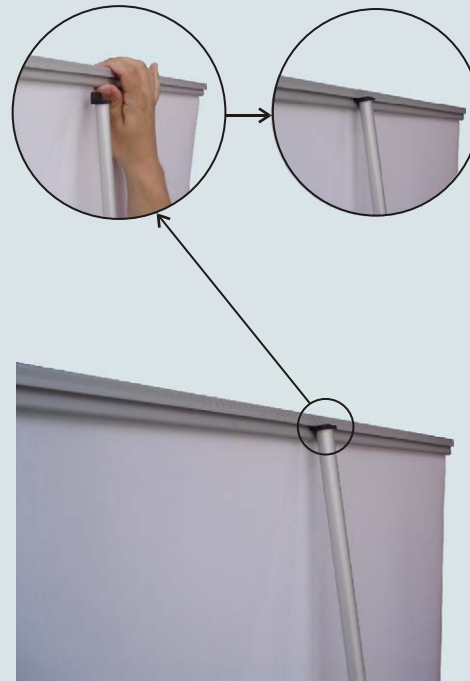




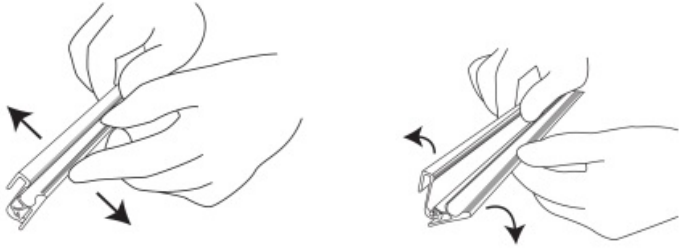
www.nivaexpo.net
e-mail:nivaexpo@nivaexpo.net

NIVA SMART ROLL UP

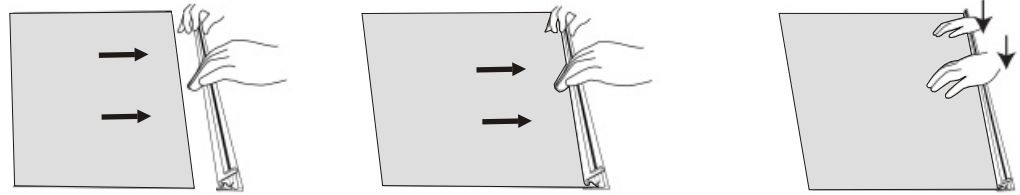
Set-up Instruction



1. Open the snap profile near the end without any tools.



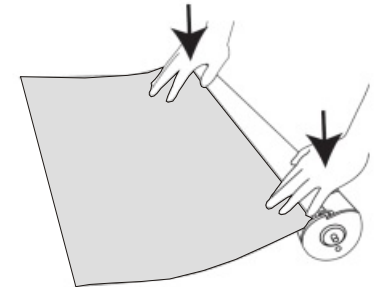
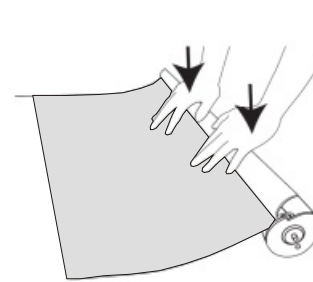
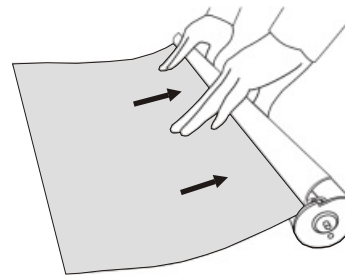
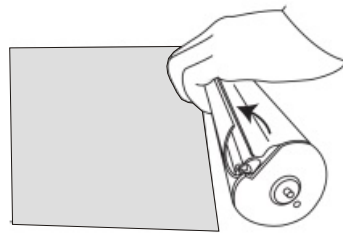
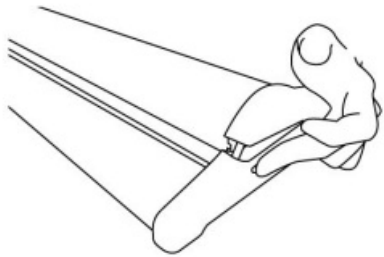
2. Insert the graphic into the profile and press hard.



3. Open the cover by clicking at the two buttons at both ends and take out the internal roller.

4. Open the snap roller.

5. Insert the graphic into the snap roller and press hard along the entire roller until it is firm. Printed side of the graphic panel must be facing up.



6. Return the roller with graphic into the base. LET THE ENTIRE GRAPHIC LAY OUTSIDE THE BASE. Close the cover.

7. Push the graphic forward slightly to activate the spring system. Remove the locking pin and let the graphic retract into the system slowly.

